

PUBLIC WORKS COMMITTEE AGENDA

March 6, 2017

4:00 pm

Legislative Chambers

Public Works Committee:

Dan Banach (Chair), Jim Multer (Vice Chair)

Elden Morrison, Earle Gleason, Terry Button

I. MEETING MINUTES & MONTHLY AUDIT

- Public Comment
- Approve minutes of February 6, 2017 meeting
- Dan Banach and Earle Gleason will sign the audit

II. HIGHWAY DEPARTMENT – Dave Hartman

ROAD FUND

- **D3310 – Traffic**
- **D5010 – Administration**
- **D5110 – Maintenance Roads & Bridges**
- **D5112 – Capital Roads**
- **D5120 – Bridges & Culverts**
 - **Valley View Rd.** – Engineering proposal received from Hunt. (\$10,000) - Res. to Authorize Chair to sign will be needed
 - **Alexander Rd.** – Pre-Cast beam shop drawings approved, contractor expected to start work first week in May
- **D5142 – Snow Removal**

III. ROAD MACHINERY FUND – DM5130

IV. BUILDINGS & GROUNDS - Joe Reed

New Business

- Weights & Measures – report attached
- Concert Series

Updates on Miscellaneous Items

- Solar
- COB 2nd Floor Reconfiguration
- Inspections

IV. EXECUTIVE SESSION if needed

HIGHWAY DEPARTMENT MONTHLY REPORT

Feb. 1 – Feb. 28, 2017

ADMINISTRATION/PERSONNEL

- Spoke at the NYS Slow Moving Vehicle Symposium on 2/21/17 in Syracuse on how SMV's affect our operations and how our operations affect them
- Met with Sen. O'Mara, Assemblymen Palmesano and Friend to discuss highway funding issues
- Vine Valley Bridge closeout
- 2016 Annual report updates
- Alexander Rd Bridge project admin
- Personnel appraisals
- Bid spec prep for March bids
- Consultant Selection for Loomis Rd. Bridge

TRAFFIC

- Work on sign making for 2017 continued in sign shop along with temporary sign and barricade repairs

CAPITAL

- City Hill Rd – culvert replacements underway
- Straw mulch applied to exposed slopes

MAINTENANCE

- Deer carcasses (7) were picked up by YCHD staff
- Brush & tree removals at Landfill
- Guiderail repair on Ferguson Corners #4
- Trees at Airport were cut – south/east end of runway 10/28
- Trees were cut on various roads (Rock Stream, Six Corners, Ridge, North Vine Valley)
- Hauled in 1A stone for 2017 surface treating
- Ditch cleaning on Rock Stream and Lakemont-Himrod

BRIDGES & CULVERTS

- Culvert survey work/planning for future projects
- Vine Valley Rd. – FHWA audit: MURK review completed. Documentation collected and written response from NYSDOT to be hand delivered to FHWA next week
- Alexander Rd. – Silverline submitting pre-cast panel shop drawings which were approved.
- Valley View Rd. – Engineering study by Hunt Engineers was completed. The report was emailed to each legislator.

SNOW & ICE

- Trucks were out 16 days in February

ROAD MACHINERY

- Two new pickup trucks have been ordered

PUBLIC WORKS COMMITTEE MEETING
3-6-2017

NEW AGENDA ITEMS

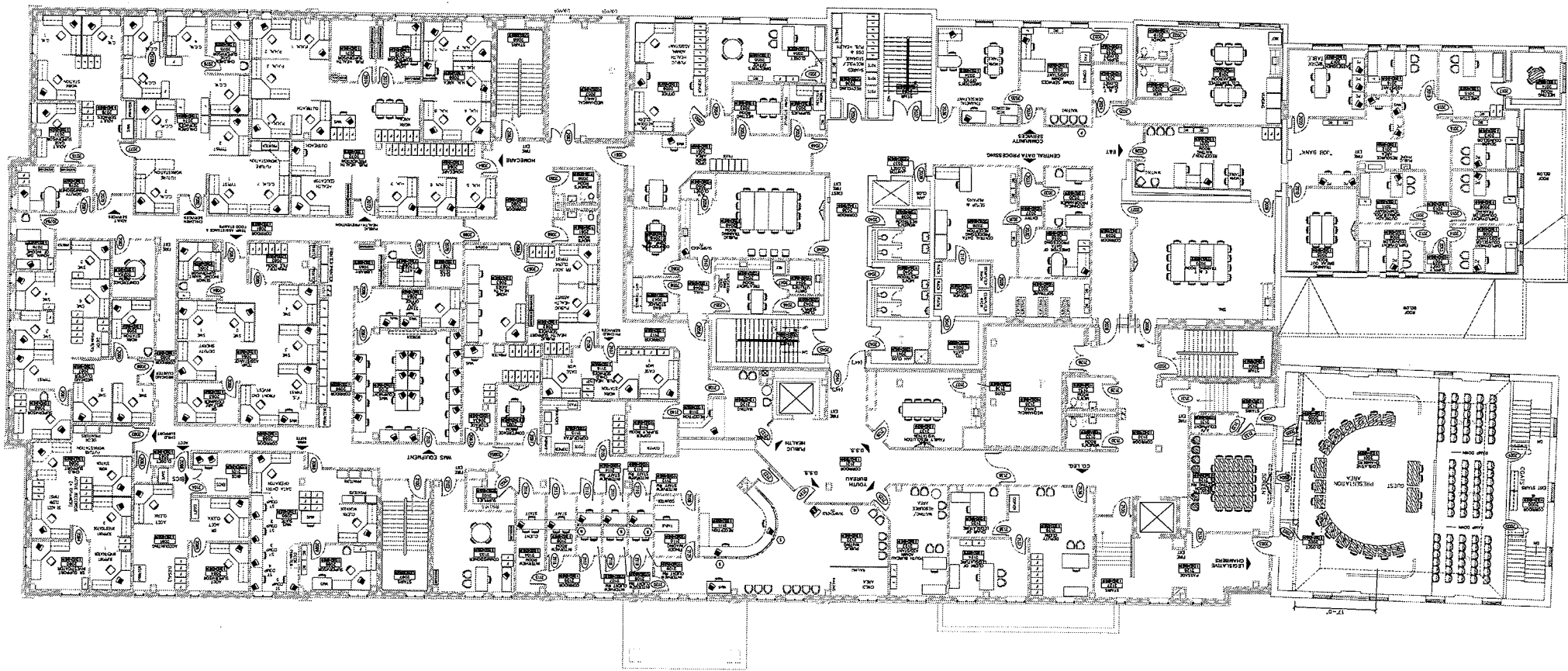
- 1- **Weights and Measures:** See attached report from Cliff Boyce.
- 2- **Concert series:** The series would run from 6-21 to 8-9 with concerts at 6:30 p.m. and one new children's show on 7-12 at 10:30 a.m.

UPDATES ON MISC. ITEMS

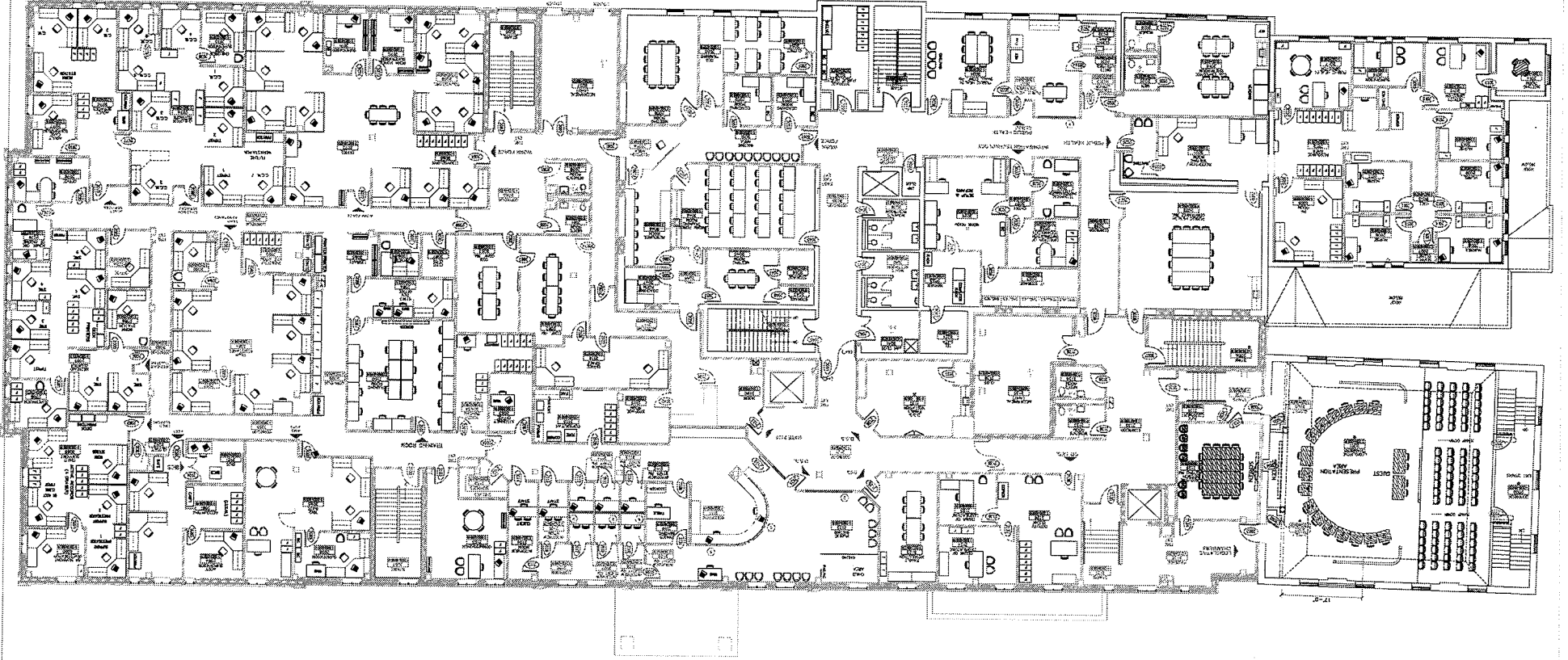
- 1- **Solar:** The County Attorney is still look into how the other counties are able to commit to longer than 5 year leases. Once we have an answer to that then we can meet again and discuss the next step if any.
- 2- **COB 2nd Floor Reconfiguration:** The work is proceeding on schedule with Work Force opening on 3-6 in their new location. I have attached six drawings showing the before and after configuration.
- 3- **Inspections:** This month the Elevators were checked and had the annual no load pressure test.

Yates County Weights & Measures Department Monthly Report

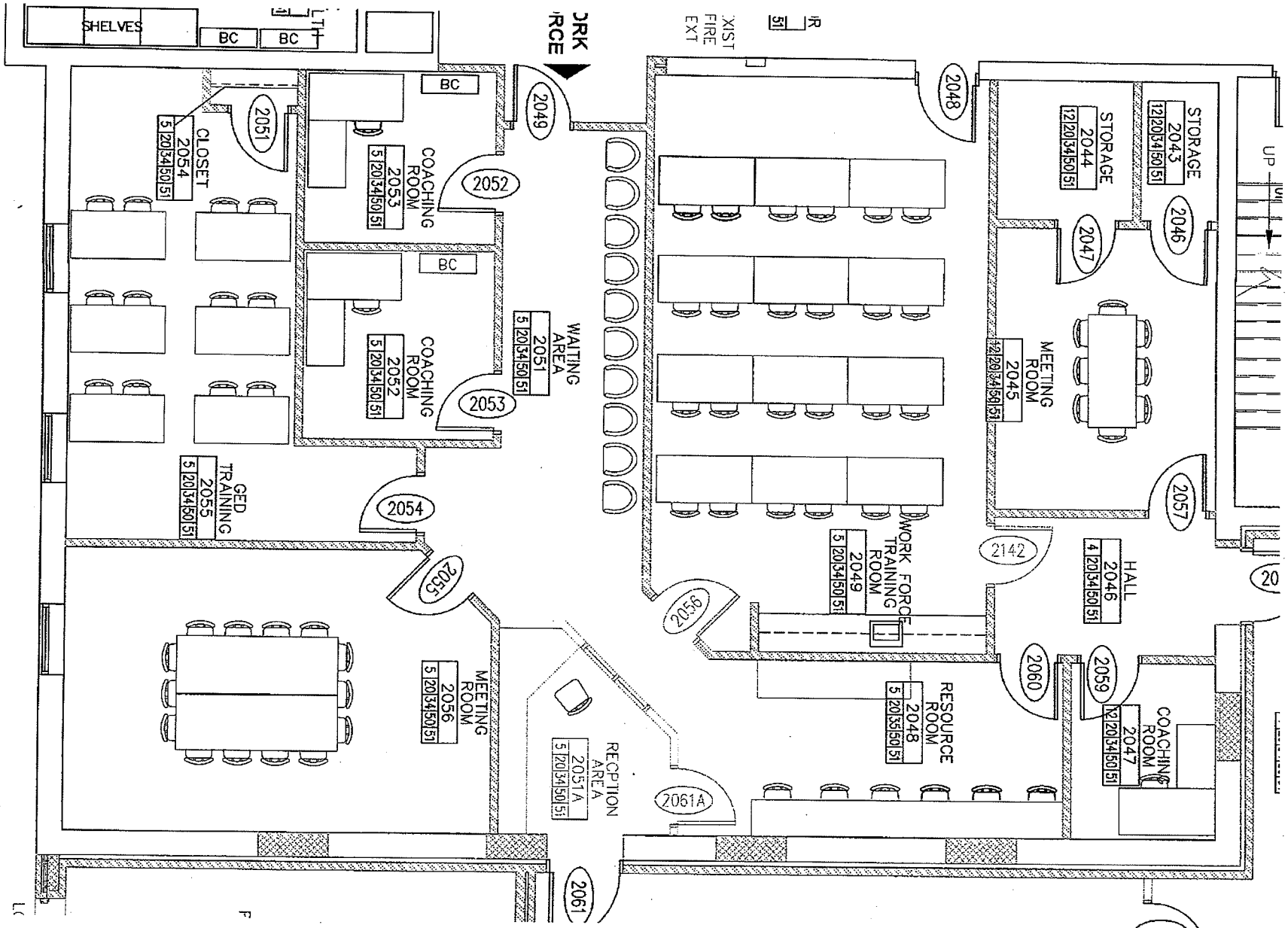
Last Inspection	Company	Establishment	Device	Q	# Cor	Inc. (+)	Inc. (-)	Inc. Other	Inc. Vis	# of Visits	Device Type
2/14/2017	Dudley Poultry	Fish/Butcher	Pre-Pack Scale	1	1					1	Fairbanks, PLB-HR5000-PQS, 100x0.01
2/14/2017	Dudley Poultry	Fish/Butcher	Pre-Pack Scale	1	1					x	Electroscale LC2424SS, 250x0.1
2/14/2017	Sugar Creek Foods	Food Store/Deli	Comp. Scale	1	1					1	Detecto, PC-30A, 30x0.01, Deli
2/14/2017	Sugar Creek Foods	Food Store/Deli	Comp. Scale	1	1					x	Hobart, 1840F, 30x0.01, Ck-out
2/14/2017	Sugar Creek Foods	Food Store/Deli	Pre-Pack Scale	1	1					x	TEC, SL9000, 0-15x0.005, 15-30x0.01
2/14/2017	Sugar Creek Foods	Food Store/Deli	Pre-Pack Scale	1	1					x	Hobart, SP1500, 30x0.01
2/16/2017	Guy Christensen	Farm/Produce	Milk Tank	1	1					3	Milk Tank Calibration
				7	7	0	0	0	0	5	
YTD Tests Completed (693 total devices in Yates County)											
		Actual:	91								
		Target	93								
Vacation: February 22 - March 7											



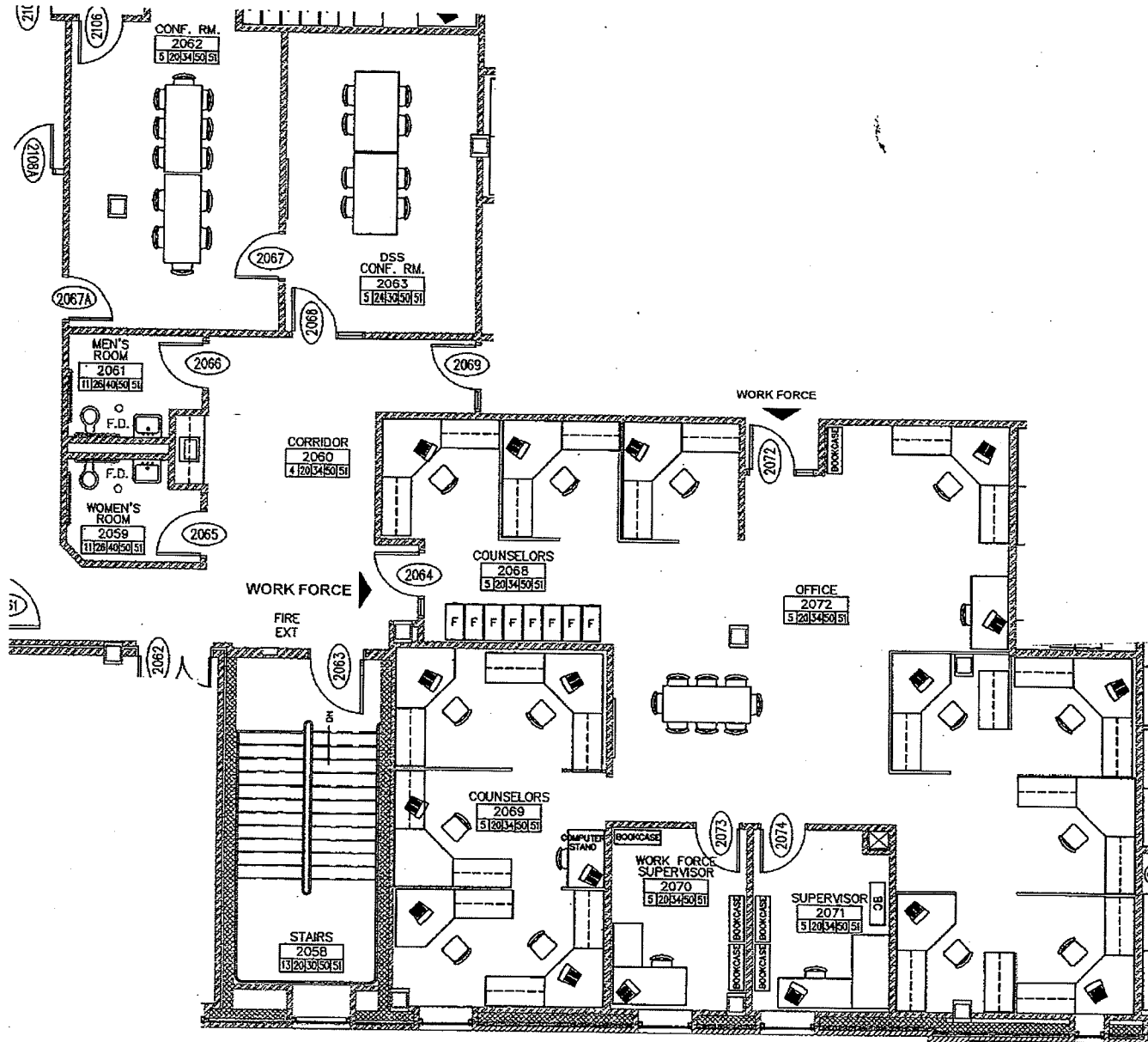
COB Second Floor 2017



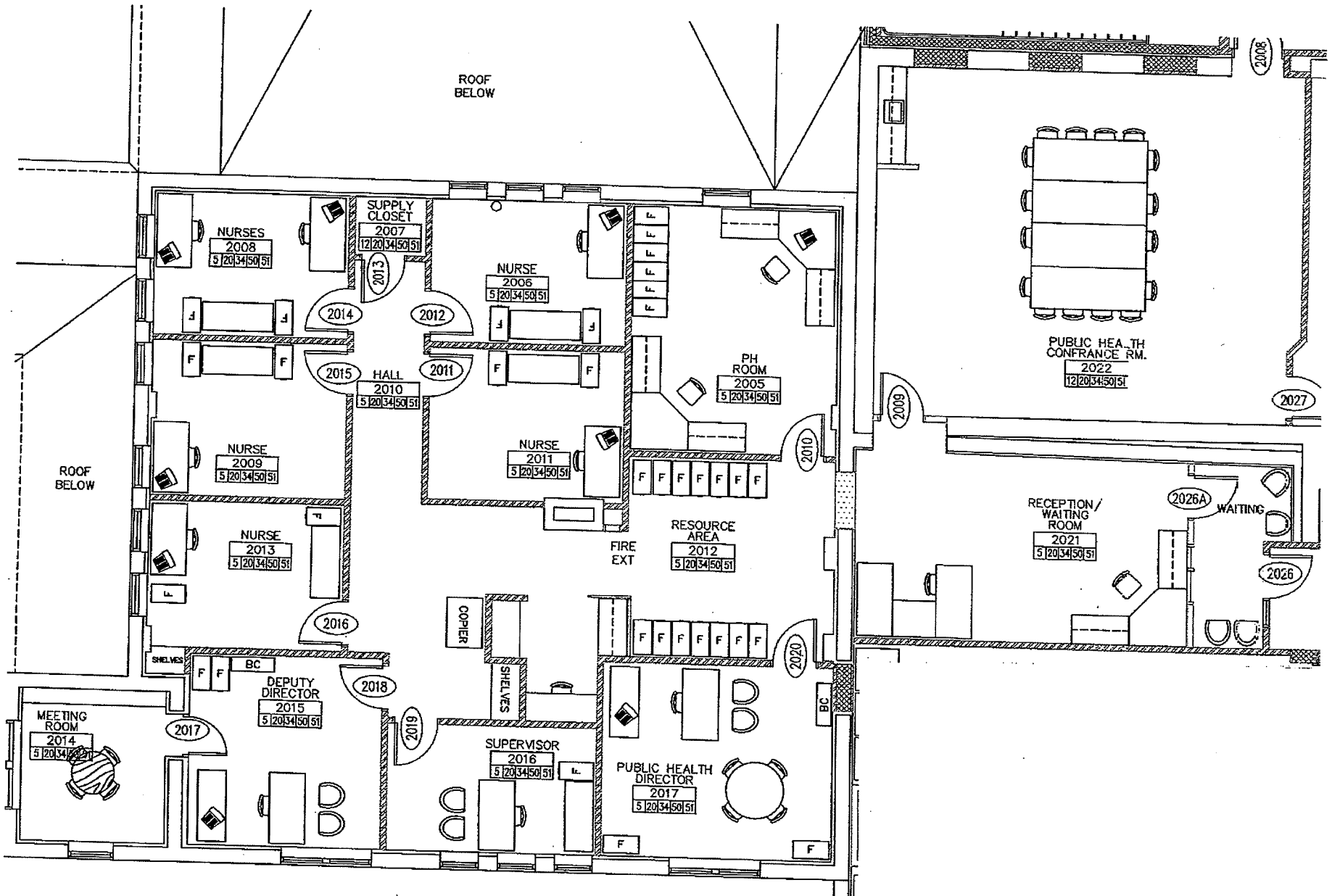
Work Force Public Area



Work Force Employee Area



New Public Health



Unoccupied space
655 SF

