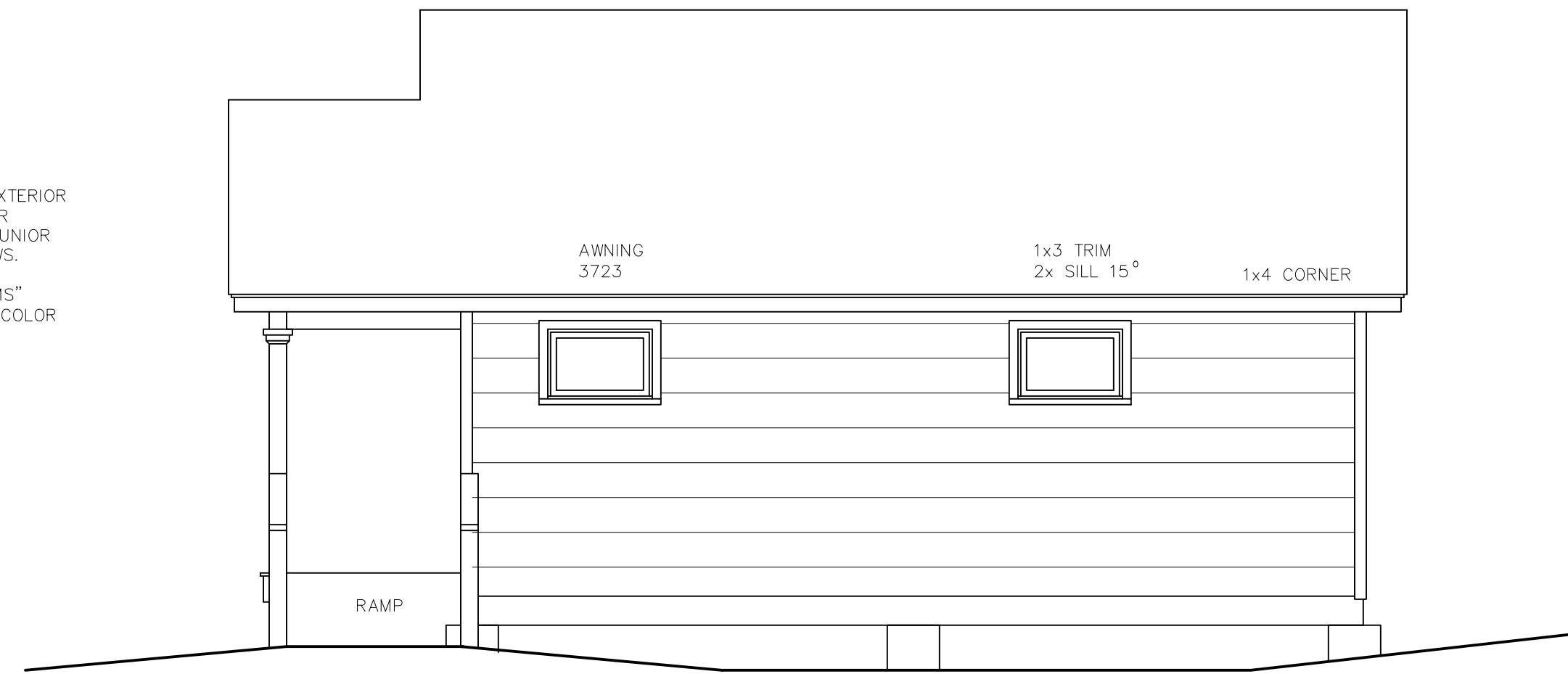


WEST ELEVATION
1/4" = 1'-0"

FINISHING & PAINTING:

EXTERIOR WOOD SIDING & TRIM: "SHERMAN WILLIAMS" EXTERIOR OIL-BASE PRIMER PLUS TWO COATS RESILIENCE EXTERIOR ACRYLIC. COLOR HUNTER GREEN TO MATCH ADJACENT JUNIOR BOATHOUSE SIDING AND DESERT TAN TO MATCH WINDOWS.

EXTERIOR PRESSURE-TREATED LUMBER: "SHERWIN WILLIAMS" SUPER DECK SEMI-TRANSPARENT WATER-BASED STAIN. COLOR RIVERWOOD TO MATCH ADJACENT JUNIOR BOATHOUSE.



SOUTH ELEVATION
1/4" = 1'-0"



EAST ELEVATION
1/4" = 1'-0"

STATEMENT OF SPECIAL INSPECTIONS:

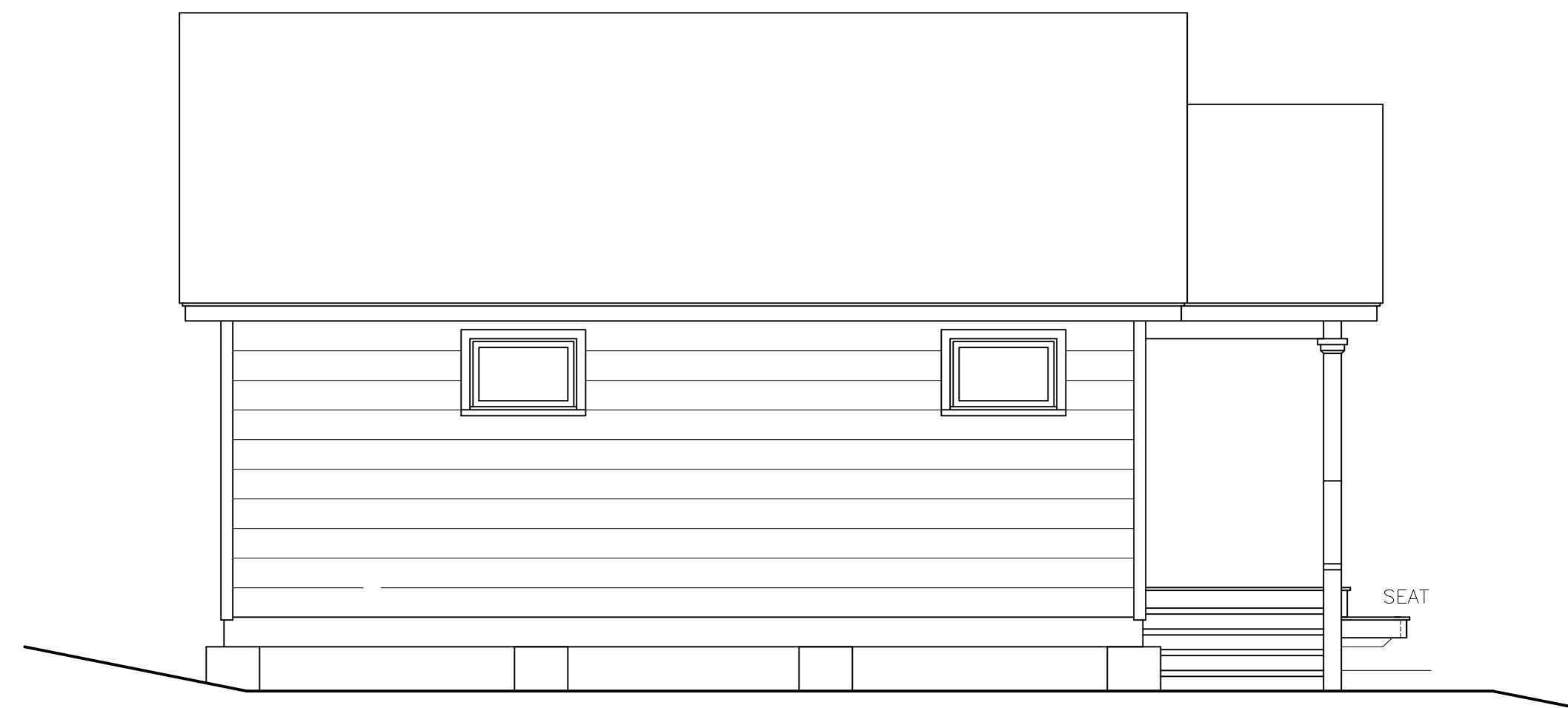
CONTRACTOR TO PROVIDE "SPECIAL INSPECTIONS" OF ITEMS LISTED BELOW BY AN INDEPENDENT APPROVED AGENCY ACCEPTABLE TO THE TOWN OF MILO.

1. EXCAVATIONS FOR CONCRETE PIERS TO VERIFY BEARING CAPACITY AND PROPER DEPTH.
2. REINFORCING FABRICATION AND PLACEMENT, CAST IN PLACE ANCHORS, AND CONCRETE MIX DESIGN.

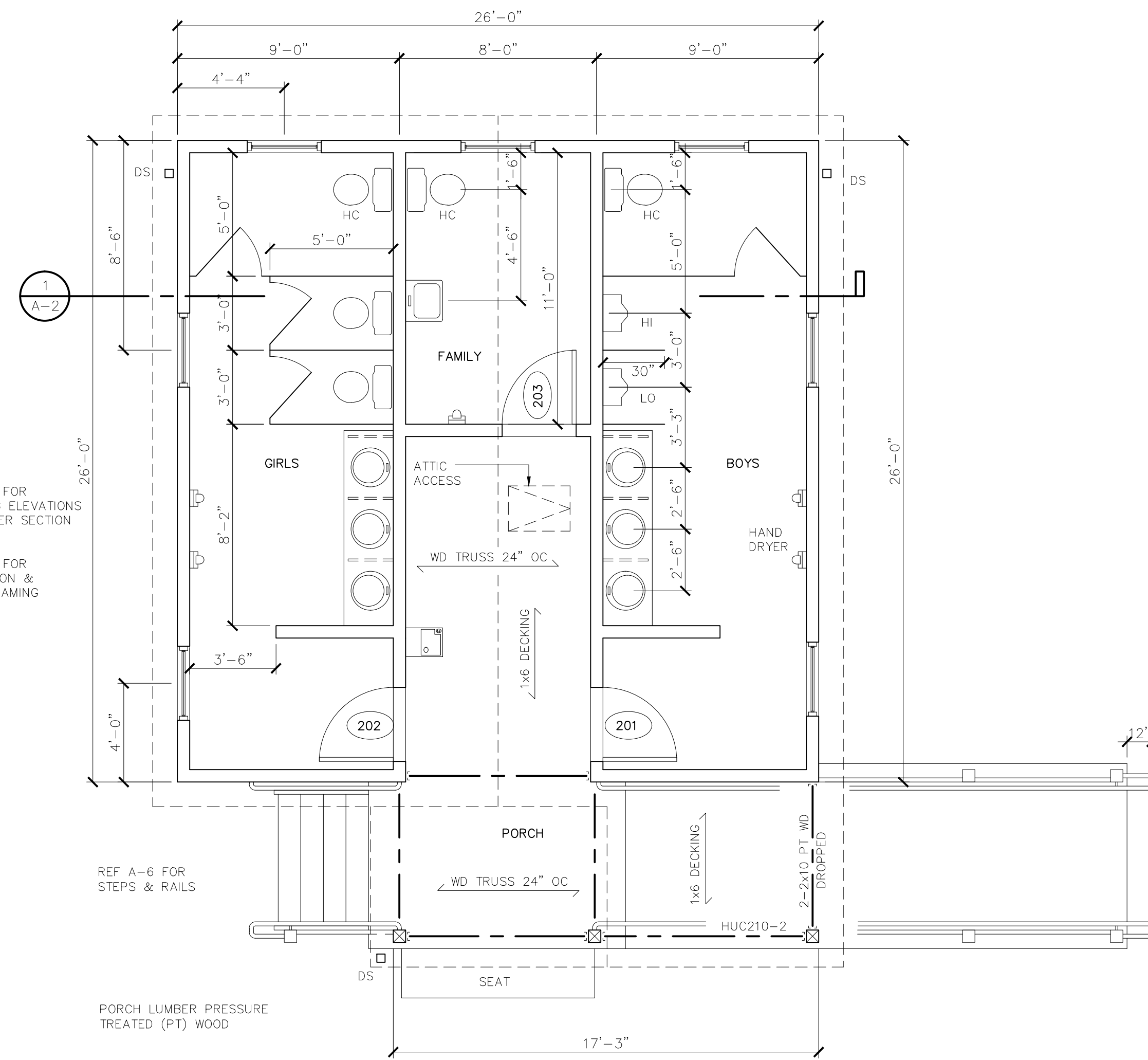
CONTRACTOR TO SUBMIT CERTIFICATE OF COMPLIANCE FROM APPROVED FABRICATOR FOR PRE-ENGINEERED WOOD TRUSSES.

ACCESSIBILITY:

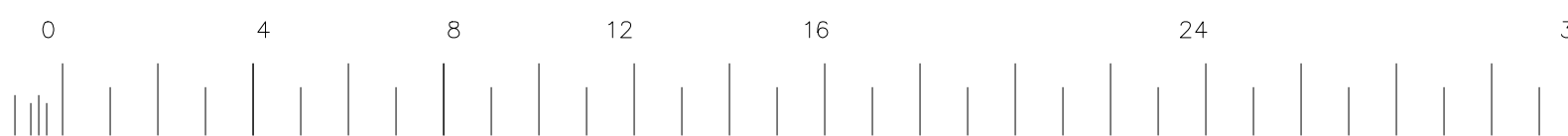
TO THE BEST OF MY KNOWLEDGE BELIEF AND PROFESSIONAL JUDGEMENT THESE PLANS COMPLY WITH THE ACCESSIBILITY REQUIREMENTS OF ICC/ANSI A117.1 2009.



NORTH ELEVATION
1/4" = 1'-0"



FLOOR PLAN
1/4" = 1'-0"

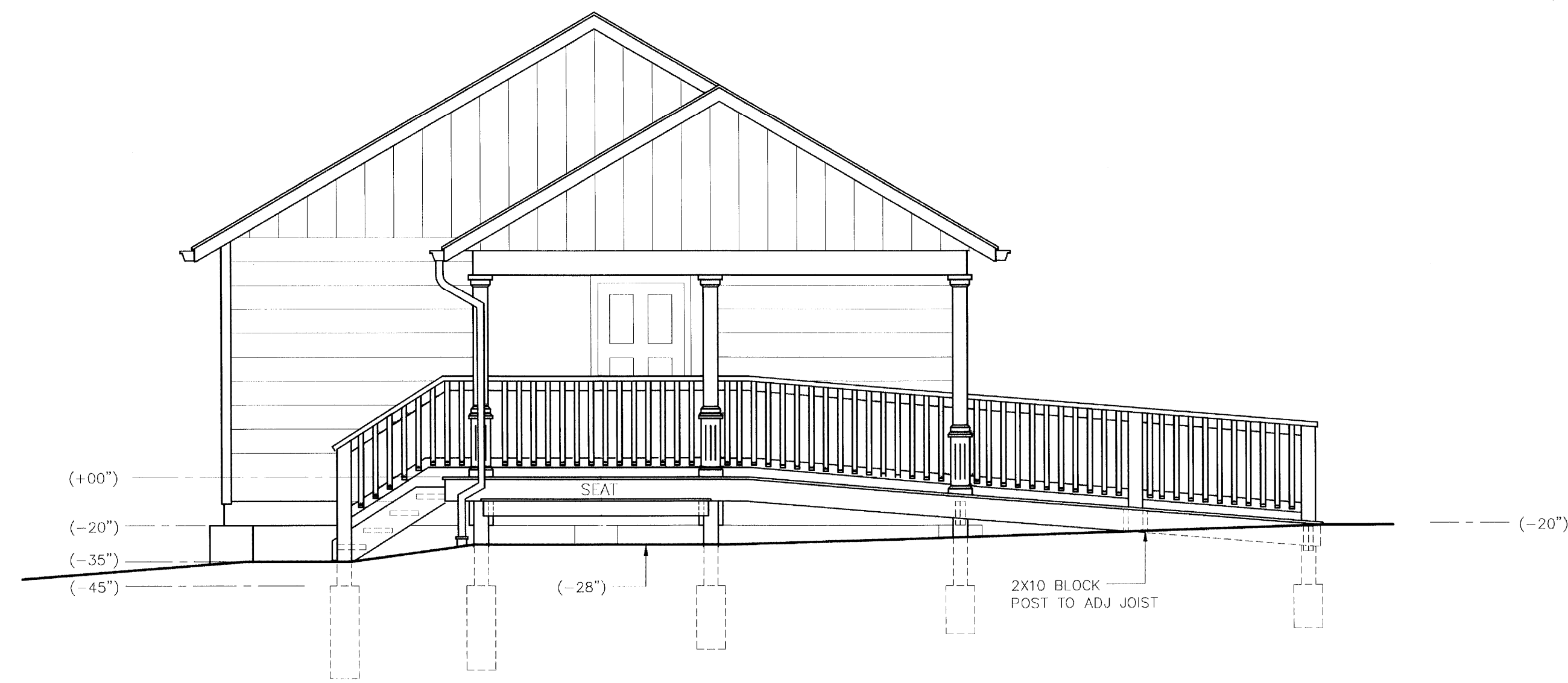
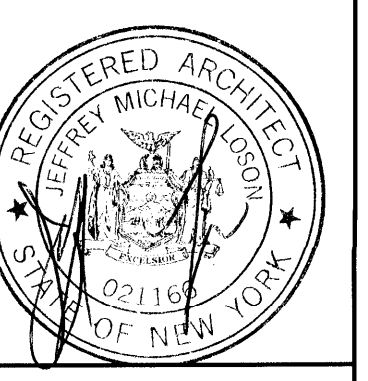


NEW BATHROOMS
YMCA CAMP CORY
140 EAST LAKE ROAD
PENN YAN, NEW YORK

REVISED 1/31/17

LOSON ARCHITECTURE PLLC
284 THORNTON ROAD
ROCHESTER NY 14617
585-406-4757

DATE	DW'G NO.
1/24/17	A-1

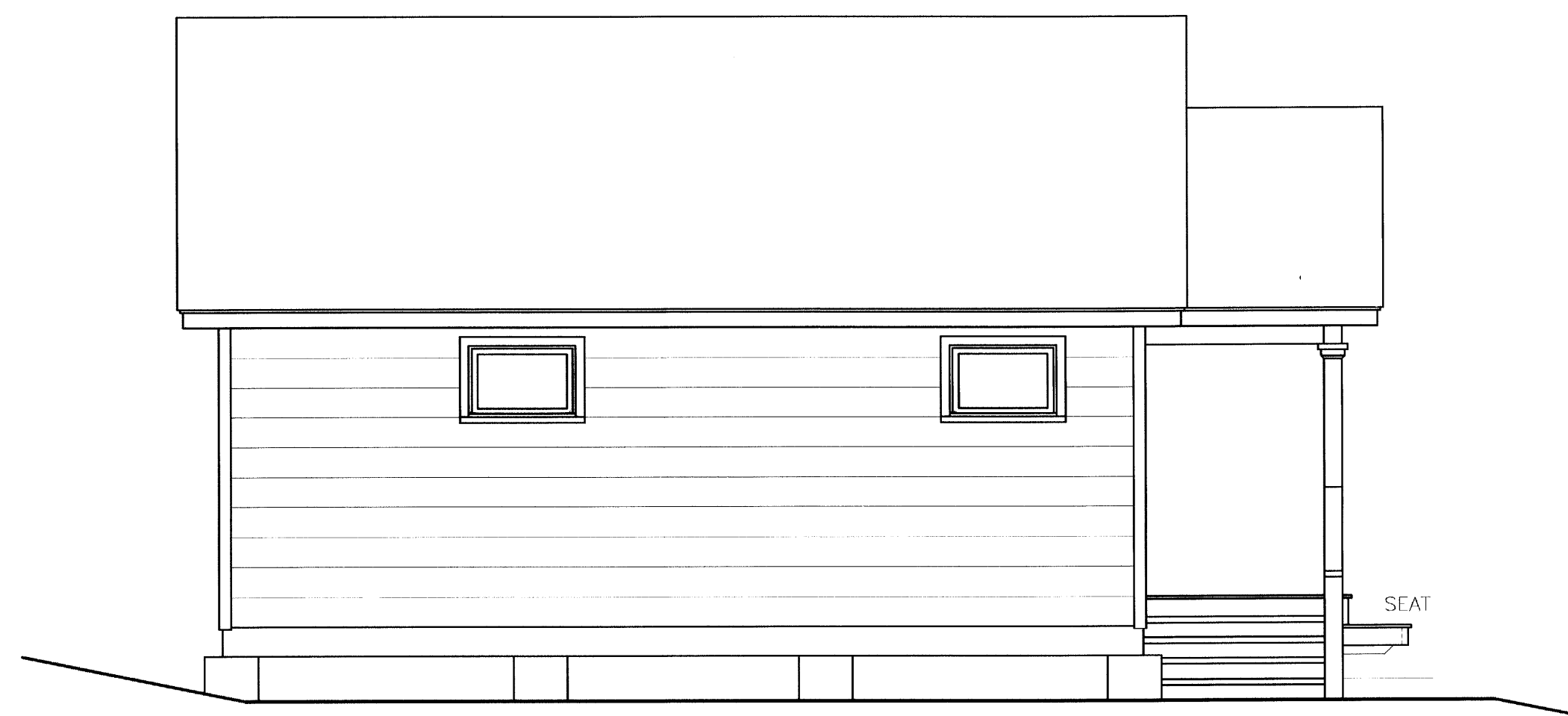


WEST ELEVATION
1/4" = 1'-0"

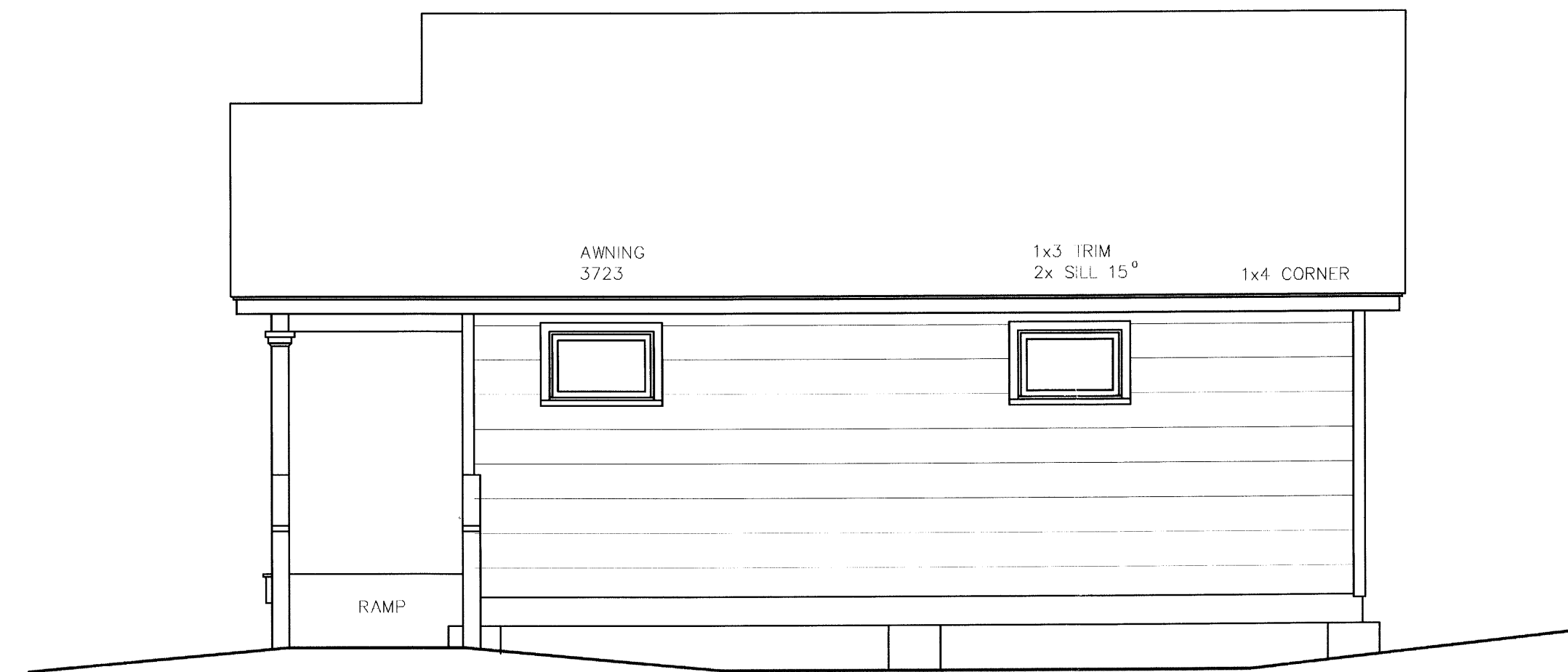
PAINT SIDING TRIM AND
OVERHANG SOFFIT
PRESSURE TREATED WOOD
TO REMAIN UNFINISHED



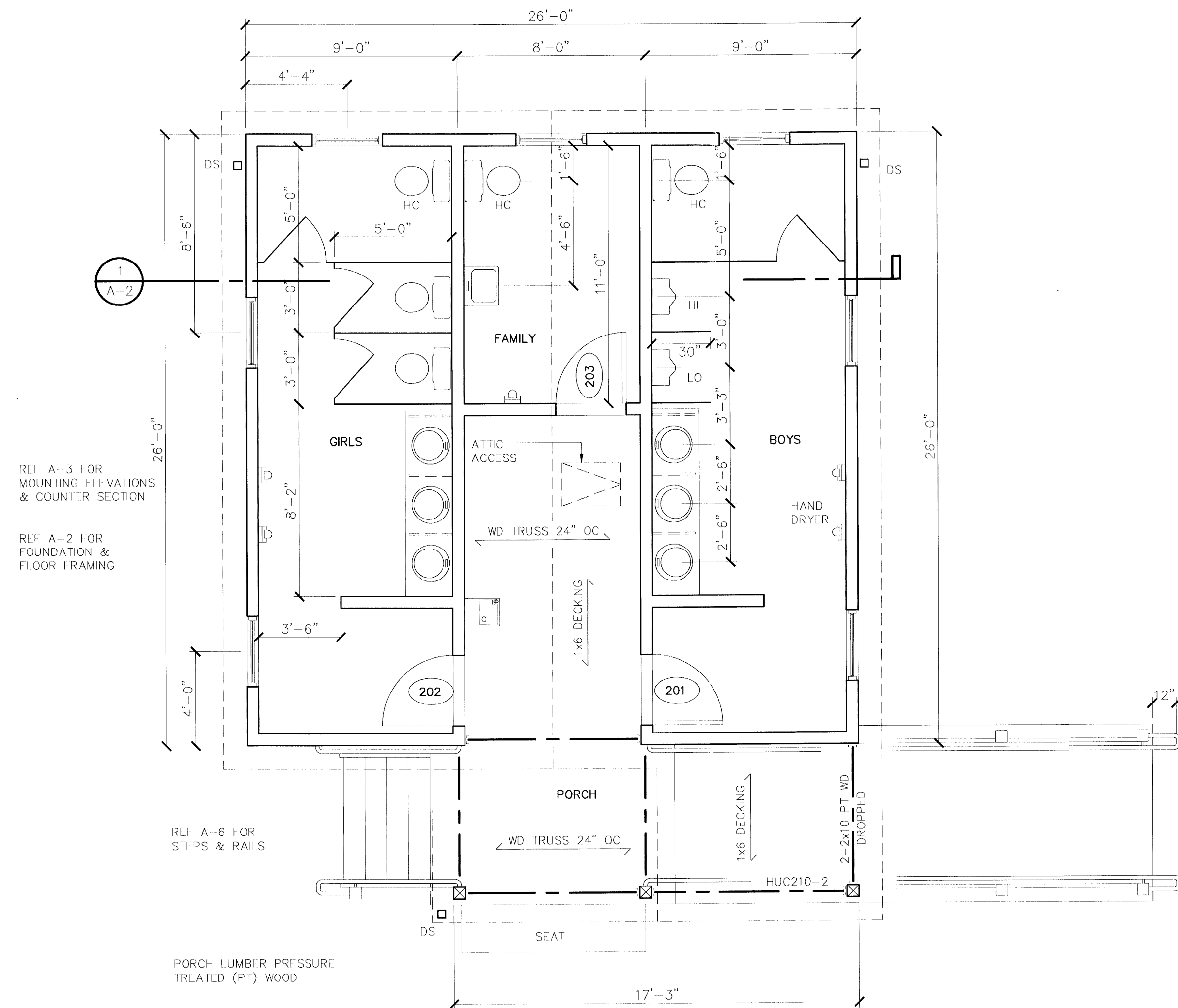
EAST ELEVATION
1/4" = 1'-0"



NORTH ELEVATION
1/4" = 1'-0"



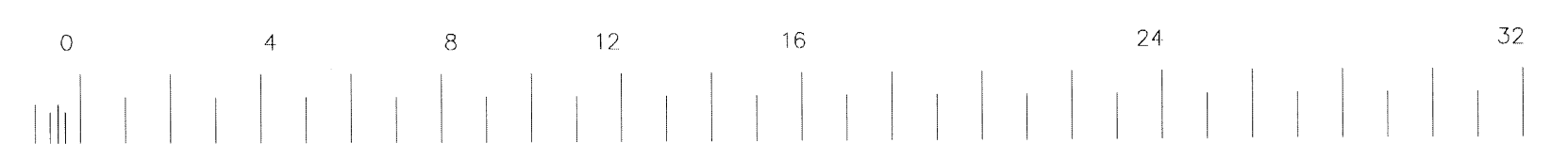
SOUTH ELEVATION
1/4" = 1'-0"



REF. A-3 FOR
MOUNTING ELEVATIONS
& COUNTER SECTION
REF. A-2 FOR
FOUNDATION &
FLOOR FRAMING

REF. A-6 FOR
STEPS & RAILS

POORCH LUMBER: PRESSURE
TREATED (PT) WOOD



FLOOR PLAN
1/4" = 1'-0"

NEW BATHROOMS
YMCA CAMP CORY
140 EAST LAKE ROAD
PENN YAN, NEW YORK

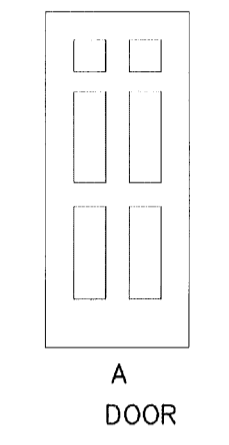
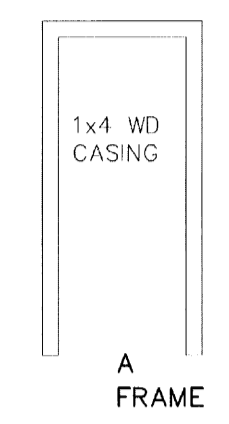
JAN 26 2017

LOSON ARCHITECTURE PLLC
284 THORNTON ROAD
ROCHESTER NY 14617
585-406-4757

DATE	DWG NO.
1/24/17	A-1



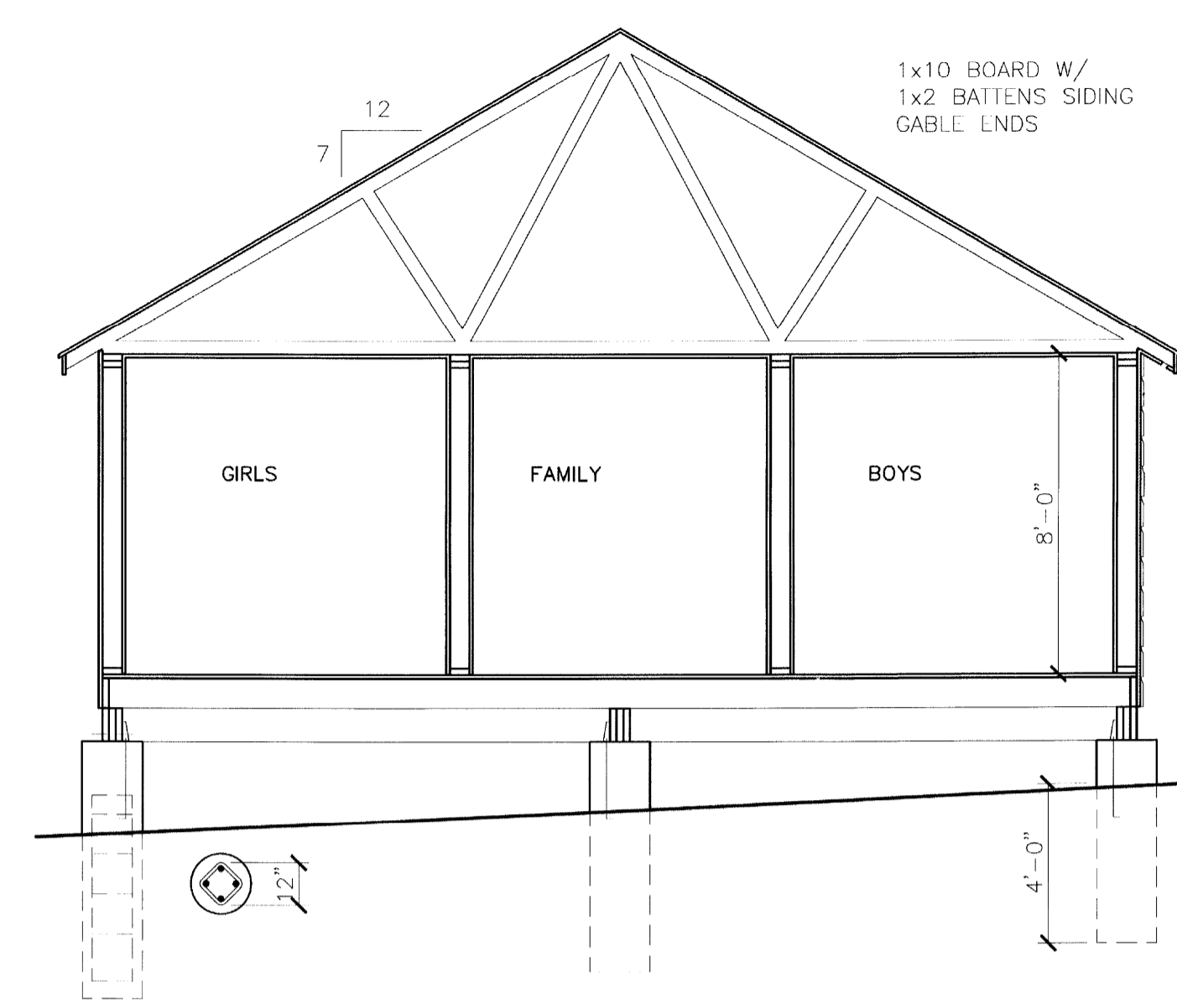
NO	DOOR		FRAME				
	TYPE	MAT	SIZE WxH	TYPE	MAT	HDWR	NOTE
201	A	FG	3'-0"	6'-8"	A	WD	2A,3,4,5,6
202	A	FG	3'-0"	6'-8"	A	WD	2A,3,4,5,6
203	A	FG	3'-0"	6'-8"	A	WD	1,2B,5,6



- NOTE:
1. PREFUNG INSULATED DOOR W/ METAL THRESHOLD
- HARDWARE:
1. LOCKSET: "SCHLAGE" AL105 SA1 626 @ 001,002,003,203
2. DEADBOLT: "SCHLAGE" 2A-B662P 2B-B660R
3. PUSH/PULL: "WLS" 8200/8302 3"x12" PLATES 1" ROUND 8" PULL 8302 ONLY @ 104.
4. CLOSER: "LCN" 4110 SERIES
5. HINGES: "STANLEY" 512 SATIN CHROME 4"
6. WALL BUMPER: "WLS" 406 WALL STOP

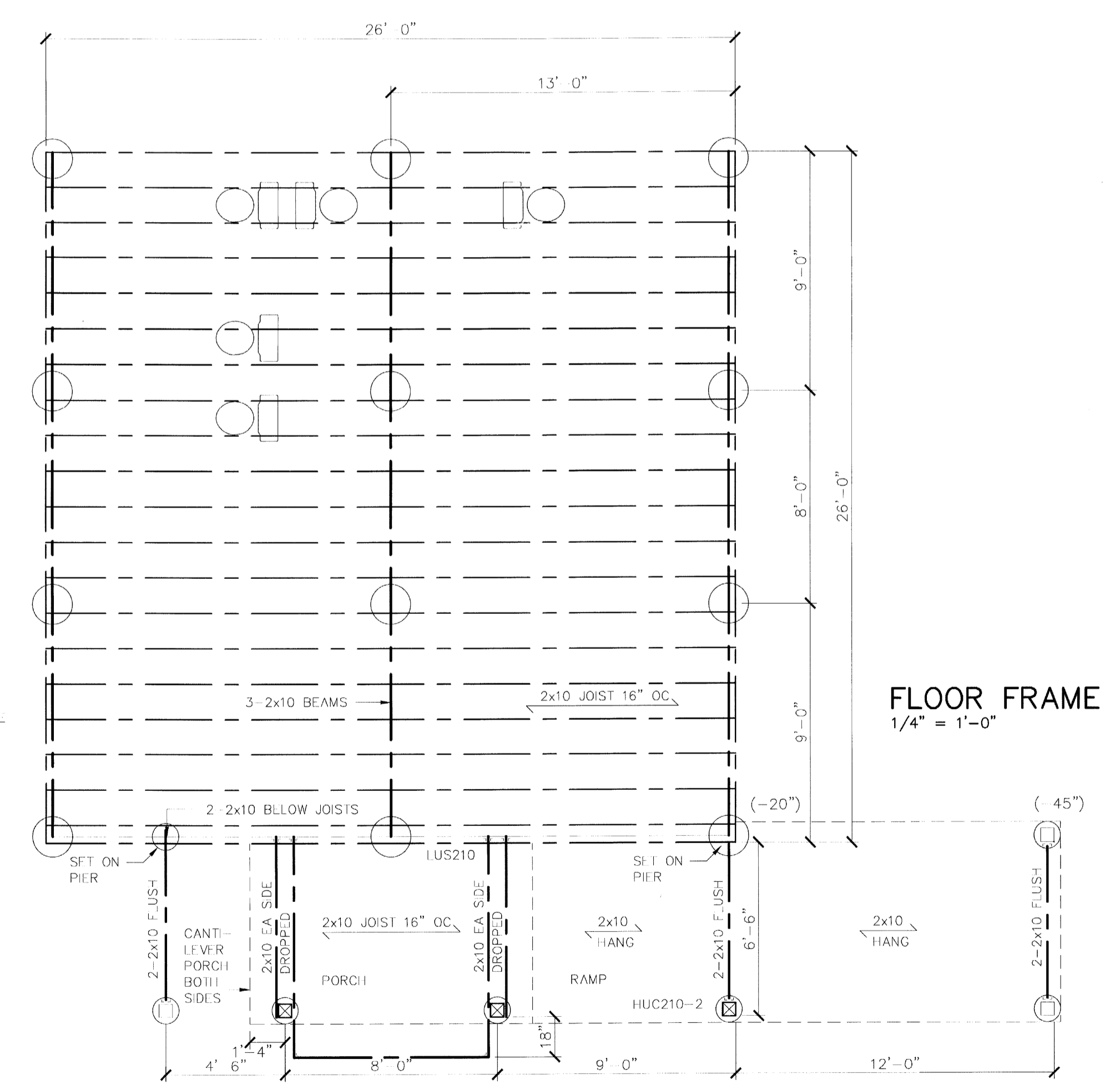
- CONCRETE FOOTINGS: 3,000 PSI, 45 AIR +/- 1% W/C RATIO-48 MAX. REBAR ASTM A615 GRADE 60.
- ASPHALT SHINGLE: "CERTAINTED" LANDMARK DESIGNER SERIES
- CERAMIC WALL TILE: "DAL-TILE" SEMI-GLOSS GLAZED WALL TILE 4x4 W/ 2x6 BULLNOSE TRIM
- CERAMIC FLOOR TILE: "DAL-TILE" KEYSTONE'S MOSAICS 2x2
- EXTERIOR WOOD SIDING:
HORIZONTAL SIDING: KNOTTY PINE 1x10 NOVELTY
VERTICAL SIDING: KNOTTY PINE 1x10 SQUARE W/1x2 BATTEN STRIPS OVER JOINTS
- INTERIOR WALL PANELS:
KNOTTY PINE 1x6 T&G V-GROOVE REVERSIBLE V-BACK
- INTERIOR AND EXTERIOR CEILING PANELS:
KNOTTY PINE 1x6 T&G EDGE & CENTER BEAD REVERSIBLE V-GROOVE
- DECKING: "IRLX" SELECT COMPOSITE DECKING SQUARE EDGE BOARD FACE SCREWED
- FIBERGLASS DOORS (FG): "THERMATRU" FIBERGLASS PRE-HUNG EXTERIOR LINERY SIX PANEL SMOOTH STAR PAINTABLE SURFACE
- WINDOWS: "MARVIN" INTEGRITY WOOD ULTREX UNPRIMED
- ATTIC ACCESS: "MILCOR" 3202-031 GRAY POWDER COATED GALVANIZED STEEL
- HAND DRYER: "XLERATOR" XL-BW, 120V

- FINISHING & PAINTING:
INT & EXT WOOD PANELING & TRIM: THREE COAT WITH "MINWAX" WATERBASE POLYURETHANE SATIN FINISH
- INSIDE WOOD WINDOWS: THREE COAT WITH "MINWAX" WATERBASE POLYURETHANE SATIN FINISH
- EXTERIOR WOOD SIDING & TRIM: "SHERMAN WILLIAMS" EXTERIOR OIL BASE PRIMER PLUS TWO COATS RESILIENCE EXTERIOR ACRYLIC.



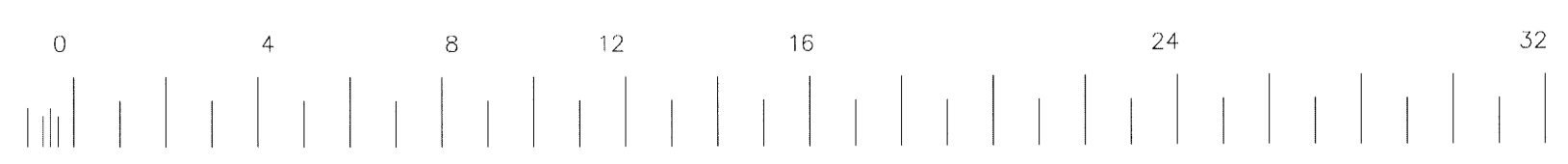
- ASPHALT SHINGLE
2C ICE & WATER @ LAVLS
15# FELT PAPER
METAL DRIP EDGE
CONTINUOUS RIDGE VENT
- 1/2" EXT PLYWD SHEATHING
WOOD TRUSS 24" OC
SIMPSON H-5 CLIP TO WALL
R-38 KRAFT BATT INS
1x6 WOOD PANELING CEILING
- 1x6 WD FSACIA
1x WOOD SOFFIT
2" STRIP VENT
5" ALUM GUTTERS
- 2x6 WALLS 16" OC
1/2" EXT PLYWD SHEATHING
1x10 EXTERIOR WOOD SIDING
R-21 KRAFT BATT INS
1x6 INTERIOR WOOD PANELING
1/2" CEMENT BOARD & CERAMIC WALL TILE WHERE OCCURS
- 2x10 FLOOR JOIST 16" OC
SIMPSON H-5 CLIP TO BEAM
3/4" T&G PLYWD SUBFLOOR
3/8" CEMENTITIOUS BACKER BOARD
THIN SET CERAMIC TILT FLOOR
WET AREA INSTALLATION
- SIMPSON HD3B HOLD DOWN W/ 5/8"x12" ANCHOR BOLTS
- 18" DIA CONC FOOTINGS W/4-#4 BARS VERT & #4 BAR 12" OC HORZ

1 BUILDING SECTION
1/4" = 1'-0"

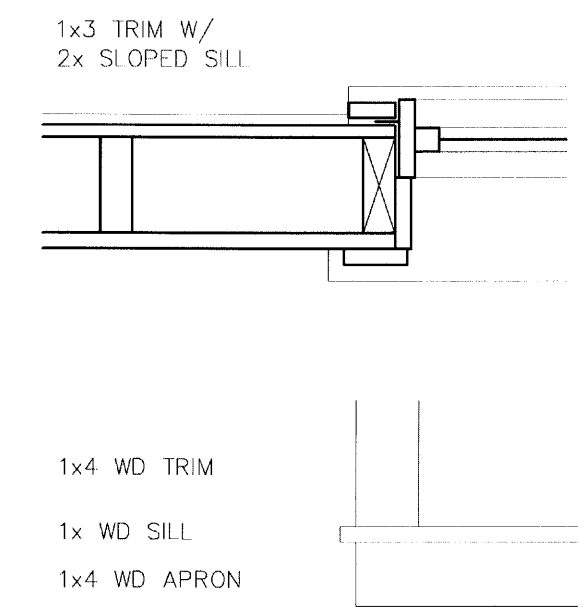


ALL LUMBLR PRLSSURL TRFATED WOOD

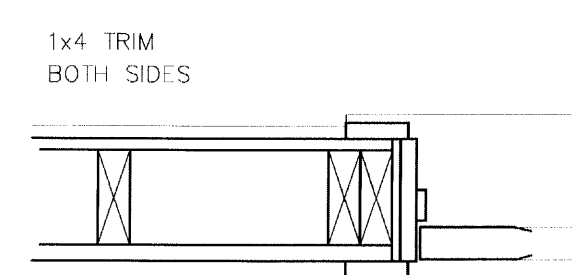
FLOOR FRAME
1/4" = 1'-0"



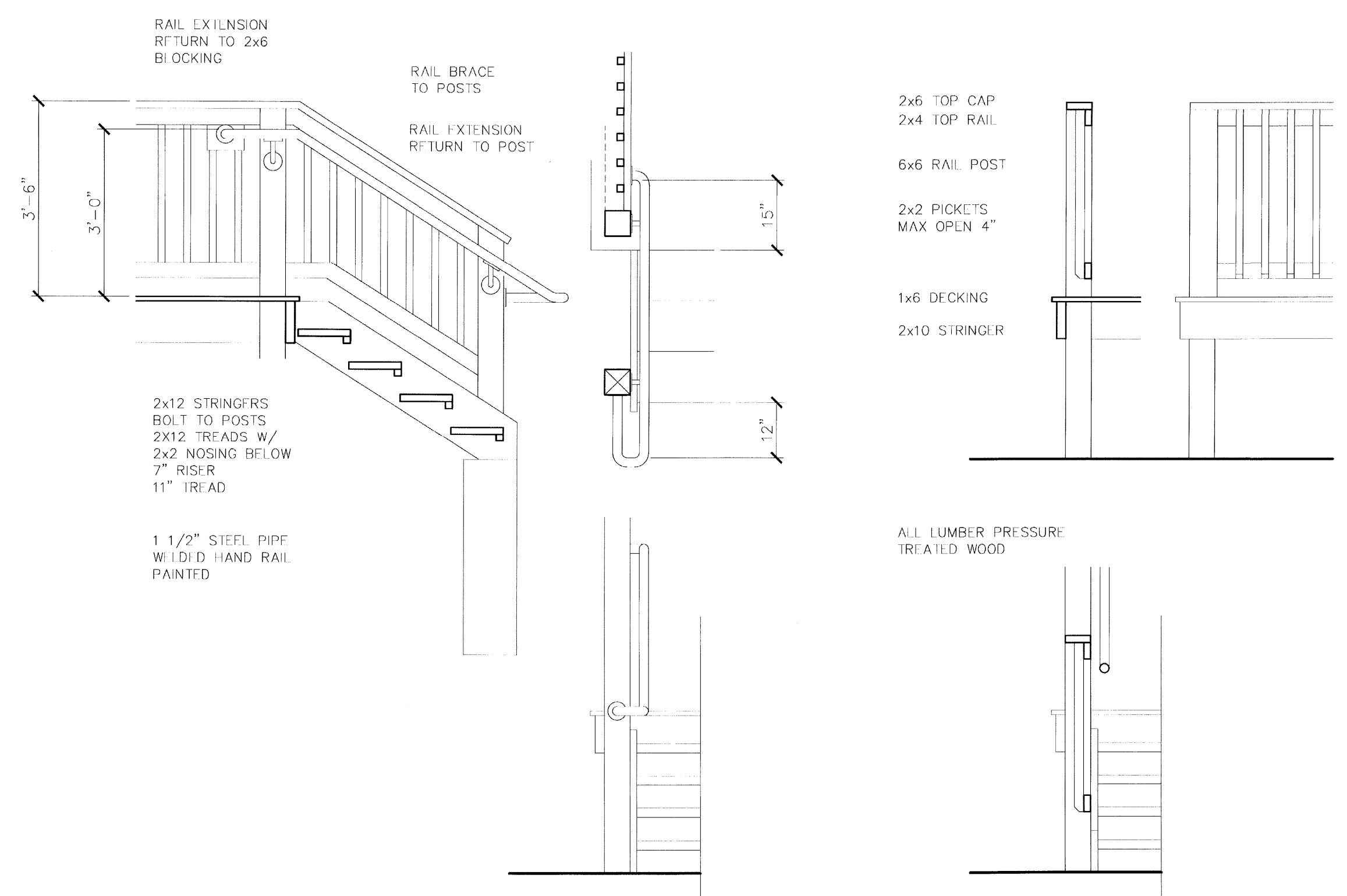
NEW BATHROOMS
YMCA CAMP CORY
140 EAST LAKE ROAD
PENN YAN, NEW YORK



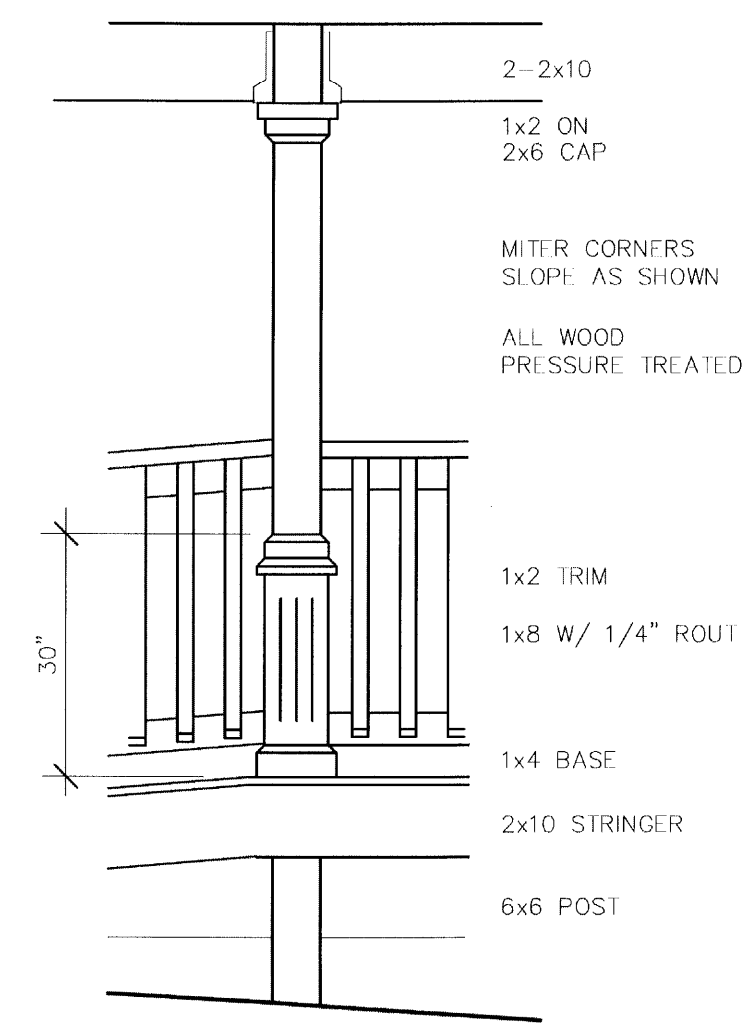
WINDOW DETAIL
1/2" = 1'-0"



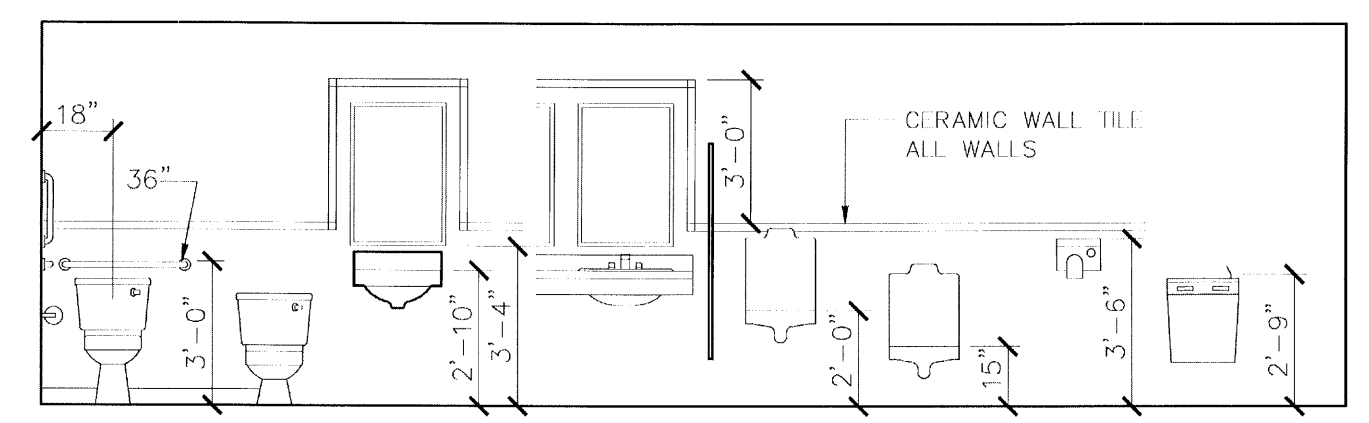
DOOR DETAIL
1/2" = 1'-0"



STAIR AND RAIL DETAILS
1/2" = 1'-0"

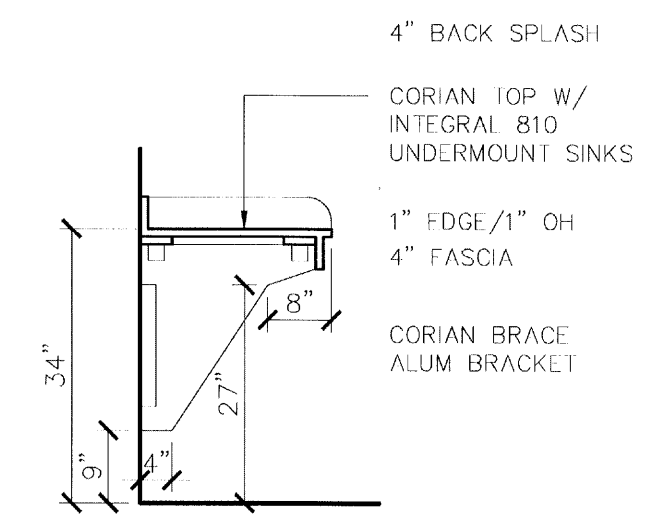


POST DETAIL
1/2" = 1'-0"

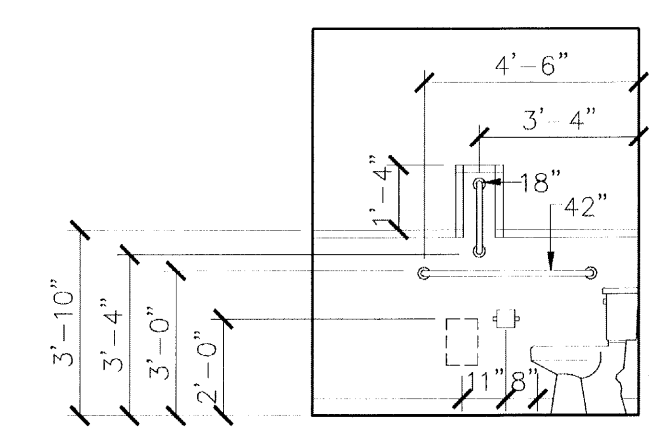


TOILET ROOM
1/4" = 1'-0"

- TOILET ACCESSORIES: BRADIFY MODELS
- TOILET GRAB BAR 812 SERIES
 - 42" SIDE WALL
 - 36" BACK WALL
 - 18" VERT SIDE WALL
 - TOILET HOLDER 5241
 - MIRROR 780 24"x36"
 - NAPKIN DISPOSAL 5781
 - PARTITIONS 400 SERIES



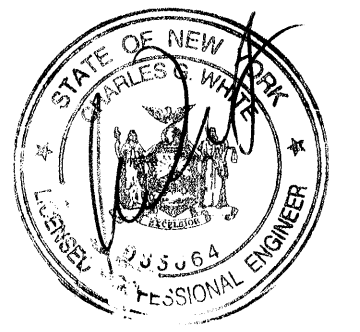
COUNTER SECTION
1/2" = 1'-0"



NEW BATHROOMS
YMCA CAMP CORY
140 EAST LAKE ROAD
PENN YAN, NEW YORK

LOSON ARCHITECTURE PLLC
284 THORNTON ROAD
ROCHESTER NY 14617
585-406-4757

DATE	DWG NO.
1/24/17	A-3



PLUMBING SPECIFICATIONS

Domestic materials and installation in accordance with the Plumbing Code of New York State.

PIPING

Domestic Water Piping - PEX - lead free

Sanitary Drainage Piping - PVC

Testing - Pressure test water piping prior to covering. Test sanitary piping by filling with water. Sanitize domestic water piping in accordance with the NY State building code.

VALVES

Domestic Water - Full Port Ball Valve - 1/2" - 2-1/2"; 150 psi SWP, 400 psi WOG. Bronze, two piece body, brass ball, screwed or solder end, balancing stop plate.

PIPE INSULATION

Molded one-piece fiberglass pipe insulation, all service jacket with self-seal feature, "K" value at 75deg., maximum 0.23. Fitting cover system shall be a complete factory-supplied system consisting of premolded PVC covers and fiberglass inserts precut to specific size, shape and thickness, complete with accessories to mechanically fasten system to adjacent pipe covering. Zeston premolded PVC fitting covers.

PLUMBING FIXTURES

WATER CLOSETS - FLOOR MOUNT- FLUSH TANK

American Standard Cadet, vitreous china elongated bowl, 1.6 GPF. Flush lever located on the open side of the water closet.

Chrome plated copper supply and chrome plated stop with escutcheon. Provide hub, brass bolts, and wax seal. Angle quarter turn key stop with cast escutcheon

White solid plastic open front seat, stainless steel hardware, check hinge and self-sustaining feature.

Accessibility - accessible fixtures shall be 17" high (seat).

LAVATORIES - WALL MOUNTED

20"x18" white vitreous china, for concealed arm carrier. 4" faucet centers, ASME A112.19.2M. Meets ANSI A117.1. American Standard Comrade

Faucet - deck mount. 0.5 GPM aerator. Complies with ADA/ANSI 117.1. - Powered automatic sensor type - Sloan Optima ETF-600 Provide transformer and accessories. Provide low voltage wiring.

Fittings: Chrome plated; two piece cast brass drainable p-trap, angle quarter turn key stops with cast escutcheons, nipples. Accessible - provide trap/supply insulation package - Truebro Lav Guard

Carrier: Floor mounted, concealed arm. Zurn Z-1231

LAVATORY - COUNTER MOUNT

Counters with integral or bottom mount sink.

Faucet - deck mount. 0.5 GPM aerator. Complies with ADA/ANSI 117.1. - Powered automatic sensor type - Sloan Optima ETF-600 Provide transformer and accessories. Provide low voltage wiring.

Fittings: Chrome plated; two piece cast brass drainable p-trap, angle quarter turn key stops with cast escutcheons, nipples. Accessible - provide trap/supply insulation package - Truebro Lav Guard (Buckaroos, McGuire)

URINAL

Vitreous china, 1.0 GPF, Washout flush with flushing rim, wall mounted, top spud, extended sides and elongated rim. American Standard Washbrook

Flush Valve: Powered automatic sensor type - Sloan Optima 186-1.0 ES.S Provide transformer and accessories. Provide low voltage wiring.

Carrier - Concealed floor mount.

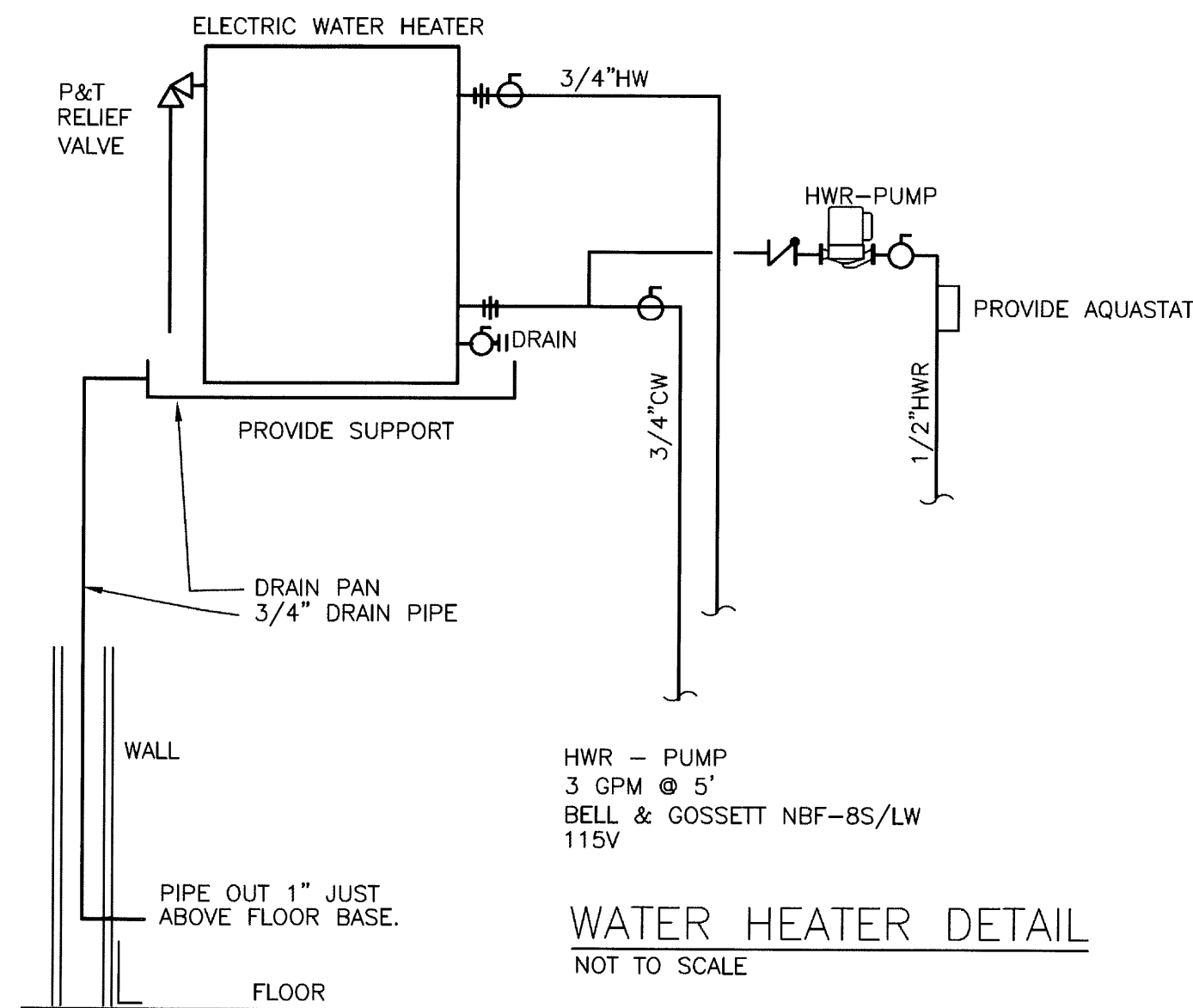
Accessibility - Mount unit in accordance with ADA requirements.

WATER COOLER - ACCESSIBLE WALL MOUNT

8GPH, 115V, Barrier-free, Elkay EZSG8L or approved equal.

Two piece cast brass p-trap, supply stop.

Mount in accordance with ANSI and ADA accessibility.



PLUMBING FIXTURE SCHEDULE						
FIXTURE	DESCRIPTION		BRANCH CONNECTIONS (b)			
			CW	HW	SAN	VENT
LAV-1(A)	LAVATORY, WALL	ASSE 1070 TEMPERING VALVE	3/8"	3/8"	1-1/2"	1-1/2"
LAV-2(A)	LAVATORY, COUNTER	ASSE 1070 TEMPERING VALVE	3/8"	3/8"	1-1/2"	1-1/2"
WC-1(A)	WATER CLOSET, FLOOR, TANK		1/2"	---	3"	2"
UR-1(A)	URINAL, WALL		3/4"	---	2"	1-1/2"
DF-1A	WATER COOLER		1/2"	---	1-1/2"	1-1/2"

A DENOTES ACCESSIBLE FIXTURE (ANSI, ADA)
(b) SIZES UNLESS OTHERWISE NOTED ON THE PLANS.

SYMBOLS - PLUMBING

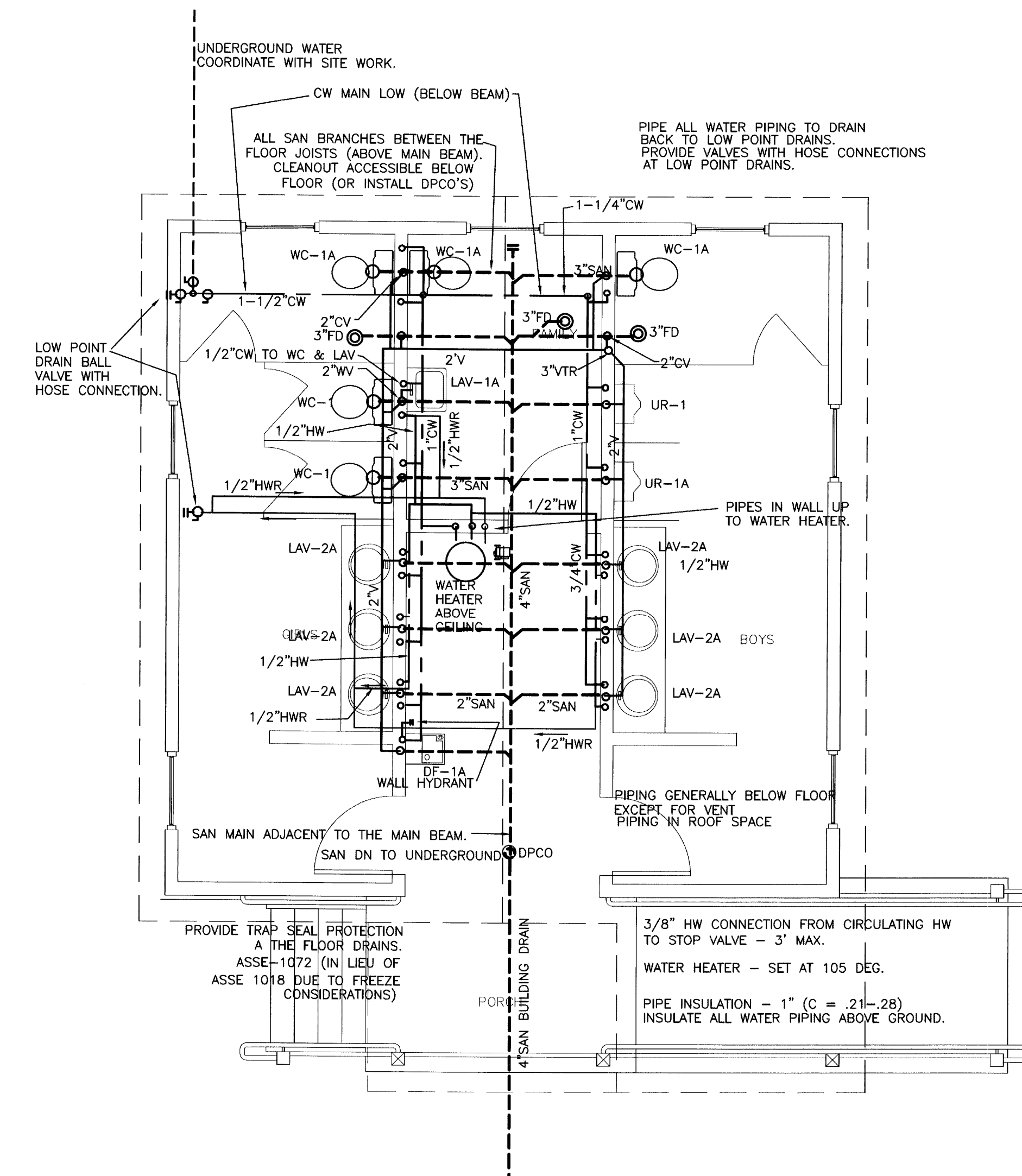
- BALL VALVE
- || UNION
- FD FLOOR DRAIN
- CW COLD WATER
- HW HOT WATER
- HWR HOT WATER RECIRCULATION
- SAN SANITARY DRAINAGE (WASTE OR SOIL)
- V VENT
- CV CIRCUIT VENT
- WV WET VENT
- WSV WASTE STACK VENT
- ST STORM DRAINAGE
- DPCO DECK PLATE CLEAN OUT (FLOOR)
- CO CLEAN OUT
- WCO WALL CLEAN OUT
- II CLEAN OUT
- VTR VENT THROUGH ROOF
- IW INDIRECT WASTE
- WH WALL HYDRANT (HOSE BIB)
- WHA WATER HAMMER ARRESTOR
- AAV AIR ADMITTANCE VALVE

NOTES - PLUMBING

- DRAINAGE PIPING AND WATER PIPING ON THE FIRST FLOOR PLAN IS GENERALLY UNDER THE FLOOR.
- PROVIDE ALL PIPING INCLUDING CONNECTIONS TO EQUIPMENT AND FIXTURES.
- INSULATE ALL DOMESTIC COLD WATER AND HOT WATER PIPING.
- PROVIDE COMPLETE SYSTEM IN ACCORDANCE WITH STATE AND LOCAL CODES. PAY ALL ASSOCIATED FEES AND OBTAIN ALL REQUIRED INSPECTIONS.
- PROVIDE OPERATING AND MAINTENANCE MANUALS IN ACCORDANCE WITH THE STATE ENERGY CODE. PROVIDE COMPLETE RECORD DRAWINGS. SUBMIT TO THE ENGINEER.
- INSTALL ALL EQUIPMENT IN ACCORDANCE WITH THE MANUFACTURER'S INSTRUCTIONS.

TEMPERING VALVE - ASSE 1070, POWERS LFG480 CHROME

EW-1
WATER HEATERS - ELECTRIC 10 GALLON TANK TYPE
1500 WATT, 120V
AO SMITH DEL OR EQUAL



TOILET ROOMS FLOOR PLAN
1/4" = 1'-0"

BATHOUSE
 YMCA CAMP CORY
 140 EAST LAKE ROAD
 PENN YAN, NEW YORK

LOSON ARCHITECTURE PLLC
 284 THORNTON ROAD
 ROCHESTER NY
 585-406-4757

DATE	DWG NO.
1-24-17	P-1

ELECTRICAL SPECIFICATIONS

Provide all work in accordance with the NEC (National Electric Code 2008) and the New York State building codes.

Provide grounding and service bonding in accordance with the NEC.

Obtain a certificate of inspection from an approved underwriters inspection agency.

Provide all materials and labor to provide a complete project. Provide all supports required.

Receptacles shall be 18" AFF unless otherwise shown. Lower level receptacles shall be at 44". Switches shall be 44" AFF.

MATERIALS

Steel Electrical Metallic Tubing: Galvanized on the outside and coated on the inside. ANSI C80.3. Zinc plated steel compression type.

THWN: Polyvinylchloride insulation rated 600V with nylon jacket conforming to U.L. requirements for type THWN insulation, copper, (75 degrees C).

MC : Insulated copper conductors, type XHHW with flexible metal armor conforming to U.L. requirements for type MC metal-clad cables. Connectors: Malleable iron set screw or 2 screw clamp type, and anti-short bushings. (MC cable only between device boxes in walls and for connections to lay-in light fixtures) Cable installed in patient care areas shall be listed for use in health care facilities.

Device Boxes - Interior Dry Locations: Pressed steel, galvanized, conforming to UL Standard for outlet boxes and fittings with galvanized steel cover or extension ring as required to comply with NEC. 4" X 2-1/8" pressed steel box, 2-1/8" deep (or as required by the number of conductors). Knockouts.

120/277 Volt Switches: rocker type, with totally enclosed case, rated 20 ampere. Provide matching two pole, 3 way, and 4 way switches.

Standard Duplex Receptacles: Full gang size, polarized, duplex, parallel blade, U-grounding slot, rated at 20 amperes, 125 volts, designed for split feed service.

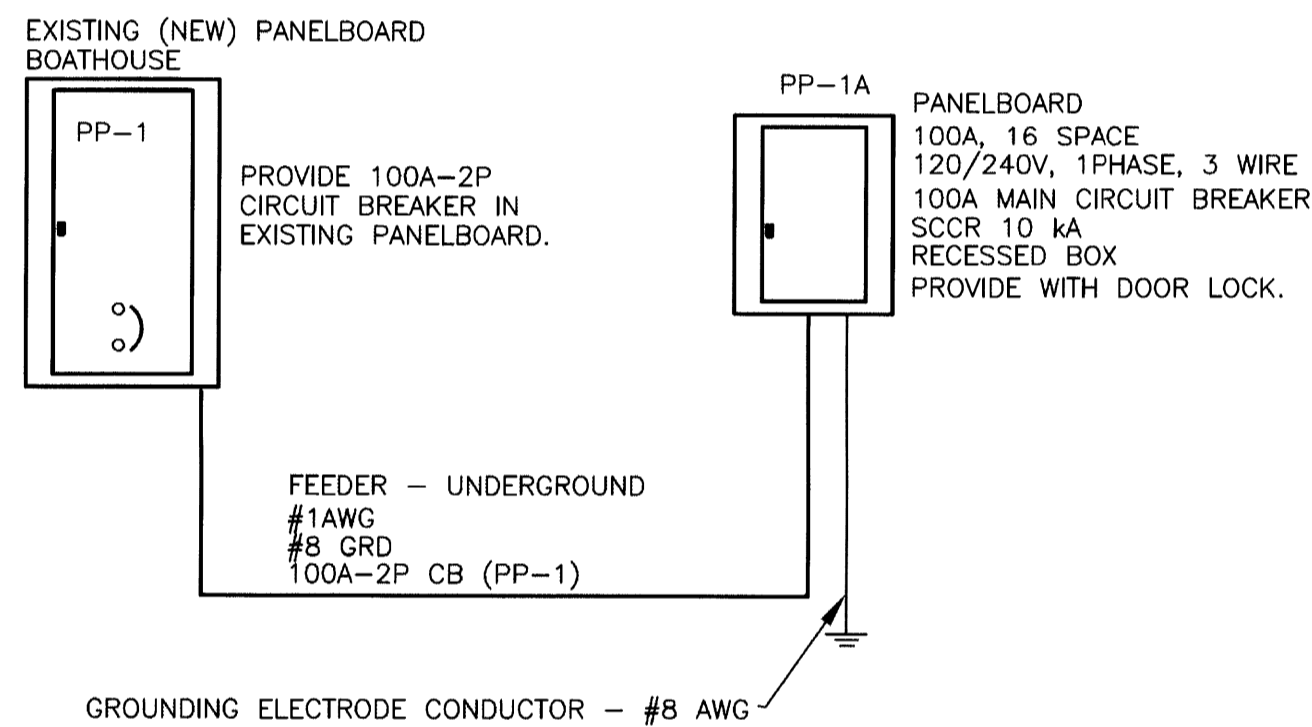
Devices shall be ivory with ivory nylon wall plates.

SYMBOLS - ELECTRICAL

- ⊕ DUPLEX RECEPTACLE
- ⊕ QUAD RECEPTACLE
- ⊕_C RECEPTACLE - COUNTER (GFI IF NEAR SINK)
- ⊕_T RECEPTACLE - TOILET ROOM (44", GFI)
- ⊕_{EX} RECEPTACLE - EXTERIOR (WEATHERPROOF, GFI)
- ⊕_S RECEPTACLE - SPECIAL
- ↷ HOME RUN CIRCUIT
- GFI RECEPTACLE - GROUND FAULT INTERRUPTING
- ⊏ DISCONNECT (SAFETY SWITCH)
- ⊞ CONTROLLER
- ⊞ SWITCH
- ⊞₃ SWITCH - 3 WAY
- ⊞_O OCCUPANCY SENSOR (WALL SWITCH)
- ⊞_V VACANCY SENSOR (WALL SWITCH)
- ⊞ OCCUPANCY SENSOR (CEILING)
- ⊞ OCCUPANCY SENSOR RELAY
- EF EXHAUST FAN
- NL NIGHT LIGHT
- ⊗ EXIT SIGN
- ↷ EMERGENCY LIGHT



LIGHT FIXTURE SCHEDULE			
FIXTURE	DESCRIPTION	LAMP	MODEL
F5	FLUOR. 4' SEALED LENS	(2) F28T5/30K	LITHONIA VSL
L1	LED EXTERIOR WALL W/ PE CONTROL	1096L, 20W, 4000K	LITHONIA OLWP
⊕	EMERGENCY FIXTURE - COLD LOCATION		DUALLIGHT PG Z HTR
FLOURESCENT - ELECTRONIC BALLAST 120V UNLESS OTHERWISE NOTED			



BUILDING FEEDER

NOT TO SCALE VERIFY VOLTAGE
INSTALL FEEDER IN ACCORDANCE WITH THE NATIONAL ELECTRIC CODE.
PROVIDE GROUNDING IN ACCORDANCE WITH THE NEC.
ALL WIRING SIZES ARE FOR COPPER.

GRINDER PUMP STATION - REFER TO SITE PLAN FOR LOCATION. PROVIDE UNDERGROUND CIRCUIT. INSTALL WIRING BETWEEN THE CONTROL PANEL AND THE PUMPS.
CIRCUIT - #10AWG WITH NEUTRAL, #10 GRD TO 30A-2P CIRCUIT BREAKER IN PP-1A (BASED ON TWO 1HP MOTORS). PROVIDE LOCK-ABLE CIRCUIT BREAKER.

ESF - ELECTRIC SENSOR FAUCET
ESFV - ELECTRIC SENSOR FLUSH VALVE
PROVIDE CIRCUIT CONNECTIONS FOR THE ELECTRIC SENSOR FAUCETS AND FLUSH VALVES. COORDINATE TRANSFORMER LOCATIONS AND LOW VOLTAGE WRING ROUTES.
PROVIDE GFI PROTECTION FOR THE CIRCUIT.
PROVIDE RECEPTACLE FOR THE FAUCET TRANSFORMER.
PROVIDE NEMA 3R BOX FOR THE FLUSH VALVE TRANSFORMER LOCATED ADJACENT TO THE WATER HEATER. PROVIDE LOW VOLTAGE WIRING TO THE FLUSH VALVES.

NOTES - ELECTRICAL

- CIRCUITS - UNLESS OTHERWISE NOTED, PROVIDE 2 #12 AWG WITH #12 GROUND TO A 20A, 1P (POLE) CIRCUIT BREAKER.
- PROVIDE COMPLETE CIRCUITS AS SHOWN OR AS NUMBERED.
- COORDINATE RECEPTACLE AND SWITCH INSTALLATION HEIGHTS WITH CABINETS AND EQUIPMENT.
- PROVIDE ELECTRIC DISCONNECTS AND SAFETY SWITCHES FOR EQUIPMENT (MECHANICAL, ETC.).
- INSTALL ALL CONDUIT AND CABLE CONCEALED WHERE POSSIBLE.
- DO NOT COMBINE NEUTRALS.
- MOUNT SWITCHES 44 INCHES ABOVE FLOOR, UNLESS OTHERWISE NOTED. MOUNT RECEPTACLES VERTICALLY AT 18 INCHES ABOVE FINISHED FLOOR, UNLESS OTHERWISE NOTED.

NOTES - HVAC

- PROVIDE OPERATING AND MAINTENANCE MANUALS IN ACCORDANCE WITH THE STATE ENERGY CODE. PROVIDE COMPLETE RECORD DRAWINGS. SUBMIT TO THE ENGINEER.
- INSTALL ALL EQUIPMENT IN ACCORDANCE WITH THE MANUFACTURER'S INSTRUCTIONS.

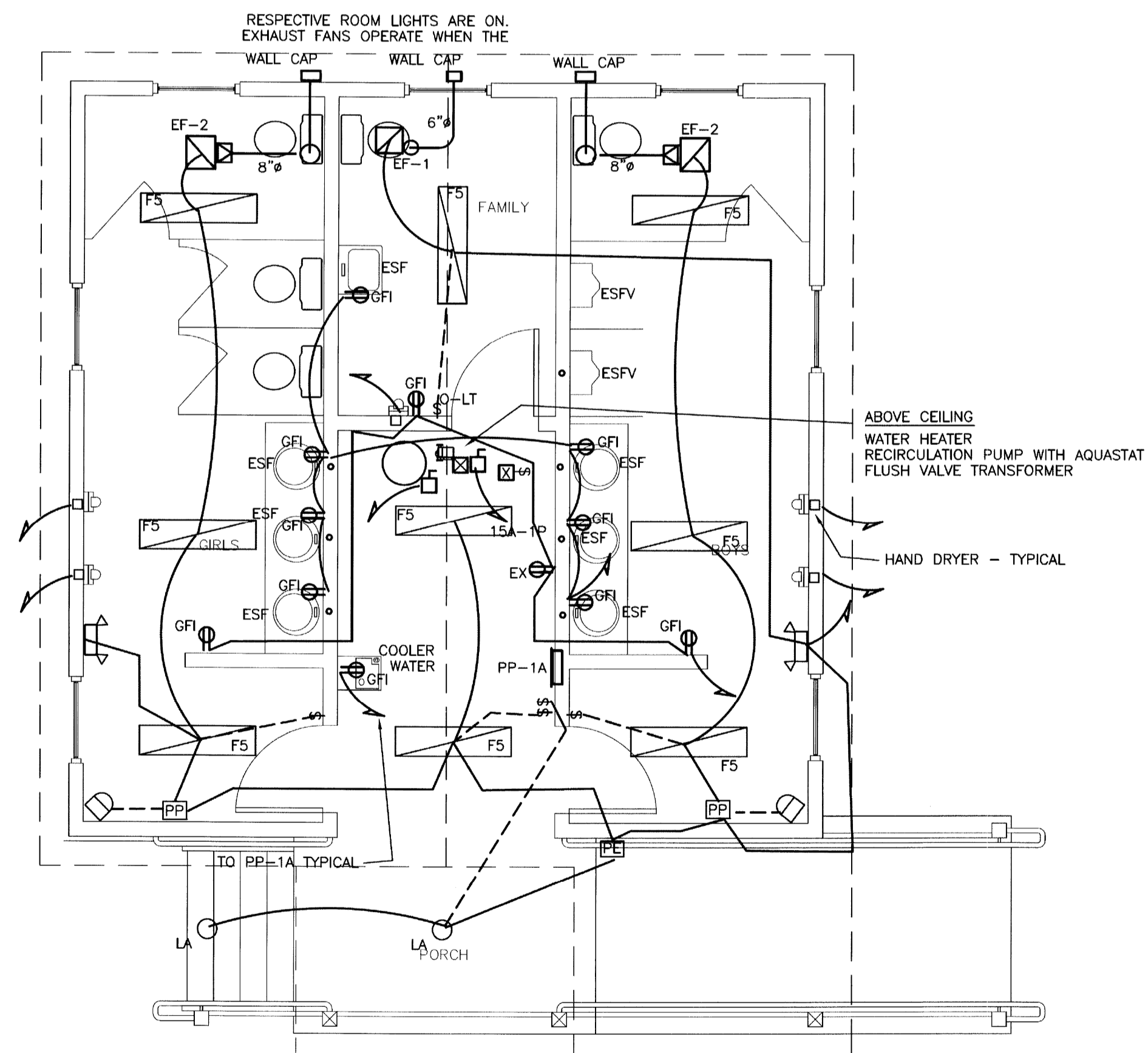
DIFFUSERS AND GRILLES
G-1 GRILLE - RETURN EGGCRATE, KRUEGER EGCS

DUCTWORK

DUCTWORK SHALL BE GALVANIZED STEEL CONSTRUCTED IN ACCORDANCE WITH SMACNA 1" PRESSURE CLASS AND C SEAL CLASS. IN ADDITION ALL SEAMS AND JOINTS SHALL BE SEALED IN ACCORDANCE WITH THE ENERGY CODE. ROUND DUCT SHALL BE SPIRAL.

EF-1 - CEILING EXHAUST FAN
104 CFM @ .125"
115V
PROVIDE GRILLE, WALL VENT
GREENHECK SP-B110

EF-2 - CEILING EXHAUST FAN
225 CFM @ .25"
115V
PROVIDE GRILLE, WALL VENT
GREENHECK SP-A250



TOILET ROOMS FLOOR PLAN

1/4" = 1'-0"

BATHHOUSE
YMCA CAMP CORY
140 EAST LAKE ROAD
PENN YAN, NEW YORK

LOSON ARCHITECTURE PLLC
284 THORNTON ROAD
ROCHESTER NY
585-406-4757

DATE
1-24-17

DW'G NO.
E-1